

Getting Started with The Well-Visit Planner™

*Engaging Parents as Partners to Customize and Improve
Well Child Care for Young Children and their Families*

www.WellVisitPlanner.org

Orientation Kit and User Sign Up Form

Complete the form to learn more and get started!



What's in this Packet?

Background.....	1
What is in the WVP?.....	2
How Does it work?.....	3
Which version of the tool is right for you?.....	4
Implementation: What does it take?.....	5
Site-Specific Options.....	6

About the Well-Visit Planner™ Suite of Tools

- The Well-Visit Planner™ (WVP) Suite of Tools feature an online pre-visit planning website for parents to complete prior to their child's well-visit (www.wellvisitplanner.org). This family-centered quality improvement method guides parents to identify priorities and key issues prior to visits and includes access to educational materials and discussion tips for each of the *Bright Futures* defined visit-specific focus areas.
- The WVP enables customization and optimal use of visit time to address priorities, concerns and other issues specific to the child and family. A customized visit guide is generated for use by both parents and their child's health care providers. Carefully anchored to national recommendations, the WVP Suite of Tools are currently available for the 4, 6, 9, 12, 15, 18, 24 and 36 month well visits and take 10-15 minutes for parents to complete.
- Abbreviated paper-pencil version of the WVP, site-specific branding and options to integrate WVP visit guides and parent-reported data fields into the electronic medical record further enhance the use of these tools to improve quality. Linkage to proprietary developmental screening websites and tools is also possible.
- You may choose to use the WVP in conjunction with a companion online, parent-completed quality measurement survey based on a *National Quality Forum* endorsed set of quality measures to complete a cycle of engaging parents in both improving and assessing the quality of care for their child and family (www.wellvisitsurvey.org)

The Need for and Importance of Engaging Parents in Well-Child Care

Despite improvements in some areas, studies continue to show persistent gaps in the quality of well child care and the nation's capacity to promote the healthy development of young children. Improving care means improving communication and partnerships with parents and meeting the unique priorities and needs of each child and family. The Child and Adolescent Health Measurement Initiative (CAHMI) designed the guideline-based, easy to use Well Visit Planner™ (WVP) suite of tools to help providers efficiently meet their well visit quality goals!



Your Child, Your Well-Visit

Parents, welcome to the Well-Visit Planner™ website (WVP)! The purpose of the WVP is to help you prepare, learn about and identify your priorities for your child's next well-visit. The WVP is for parents of children who are from 4 months through 3 years of age. Complete it before every well-child care visit by going through these three steps:

- Step 1**
Answer a Questionnaire
about your child and family
- Step 2**
Pick Your Priorities
for what you want to talk or get
information about at your child's
well-visit
- Step 3**
Get Your Visit Guide
that you and your child's health care
provider will use to tailor the visit to
your child & family needs

Development, feasibility and what parents are saying!

The WVP tools were developed and tested by the Child and Adolescent Health Measurement Initiative (CAHMI) for use in pediatric practices over four years and through grant from the federal Maternal and Child Health Bureau (R40 MC08959 03-00; 2008-2012). It's continued development and implementation is supported by the CAHMI, volunteer advisors and through support from HRSA/MCHB through Cooperative Agreement U59-MC06890.

National experts, families and pediatric providers collaborated in the design, development and testing of the WVP tools to ensure feasibility and to optimize impact on the quality and efficiency of the well child visit for parents, children and provider teams alike. Initial testing documented improvements to provider office work flow and patient engagement and experience and quality of care.

Over 92% of the 3000 parents included in the initial testing of the WVP reported they would recommend the tool to other parents, comfort with time required to complete the tool and that its use helped them understand goals for each well visit and prioritize topics for discussion with their child's health care providers.

The WVP was recognized in the Health 2.0/Academy Health 2012 Relevant Evidence to Advance Care and Health (REACH) competition and has relevance for meeting Meaningful Use and Maintenance of Certification requirements.

Keep going: How does it work? →

How it Works, What's in it?

How the Well-Visit Planner™ Works and What's In It

Parents of young children visit the Well-Visit Planner™ website and complete the following steps before their child's age-specific well visit:

Step 1



Answer a Questionnaire
about your child and family

Step 2



Pick Your Priorities
for what you want to talk or
get information about at your
child's well-visit

Step 3



Get Your Visit Guide
that you and your child's
health care provider will use
to tailor the visit to your child
& family needs

Public Use Site and Site-Specific Options

There are two ways to implement the WVP:

1. Free Public Use Site
 - Available for anyone to use
2. Site-Specific WVP, options include
 - Unique URL/Domain Name & Branding
 - Data collection and population reports
 - Integration of visit guide and/or data fields into the electronic medical record
 - Some tailored content

Step 1: Answer a Questionnaire

Examples of Content:

- Strengths and positive observations about child and parenting
- Child health, including concerns about functioning, feeding, immunization reactions, medications and supplements.
- Family and child environment, including recent changes, stressors, family medical history, secondhand smoke, parental coping & depression
- Developmental surveillance and questions
- Identification of children with special health care needs and provision of developmental screening
- Relationship to child, geography insurance, other...

Step 2: Pick Your Priorities

Age-specific topics parents can choose from and get more information about, such as:

- Family functioning (balancing parent roles and child-care, family support, cultural beliefs about child-rearing, etc)
- Nutrition and feeding choices
- Establishing routines
- Behavior and development
- Language development
- Toilet training readiness
- TV watching and other media
- Guidance and discipline
- Sleep patterns and issues
- Domestic violence
- Oral health
- Safety concerns

Step 3: Get Your Visit Guide

The Visit Guide includes:

- Summary of responses important to raise with child's provider
- Selected "Priorities" as well as sample questions parents can ask about the priorities
- Space to write in additional questions

For Site-Specific, EHR Option: Provider Visit Guide

- Parent responses to entire tool integrated in EHR
- Educational information provided to parents regarding the "Priorities" they selected

Partnering with Parents to Improve Well Child Care

The **Well-Visit Planner™** engages, educates, and prepares parents of young children in tailoring and optimizing time spent in well visits.



1 Set Up



with interactive website including questions and educational content relevant to their child



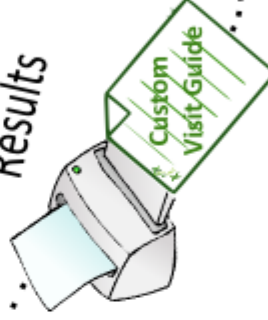
EHR Feed

Secure Email

Collect Data on Your Population



Print & Save Results



Focus the Visit
Save Time
Streamline Work Flow
Cover What's Important



Improve Quality

WellVisitPlanner.org
MyClinic.WellVisitPlanner.org

Which WVP Tool Option is Right For You?

What are your goals and what is your care philosophy?

First, it is important to make sure that your goals and the culture of your practice are synergistic with the goals of the WVP and its influence on how you provide care. You should consider implementing the Well-Visit Planner if the following characteristics are true about your goals, practice and philosophy:

- I would like to implement a quality improvement tool that focuses on improving well-child care for young children (current options: 3 to 40 months of age)
- I believe that parent engagement in pediatric health care is essential to optimal health and outcomes for children

If you checked both of these, you should continue on to see which version of the WVP is right for your practice!

Which version of the WVP is right for your practice?

There are two primary options for using the WVP: 1) as a **Public Use website** and 2) as a **Site-Specific website**. Walk through the following diagrams to see which version is right for your practice.

Get Started: Your practice has decided to implement a quality improvement (QI) project to improve the quality of well-child care for patients between the ages of 3 months and 4 years.

For your QI effort, do you want site branding, direct delivery of patient Visit Guides & data?

Public Use Site Option: Key Features

- Free access to the Well Visit Planner site
- No site branding (logo) or tailored content
- Parent delivers their Visit Guide/Data to you (via secure e-mail or at time of visit)
- Parent reported data fields not included in EHR

Yes

The public use WVP is FREE to use. There may be small costs for printing parent waiting/visit room posters, invites and education materials.

If the **Public Use WVP** is the right version for you and your practice, continue reading and learn more about the WVP or complete the User Sign-Up Form to request the Implementation Toolkit.

User Sign-Up Form is Here and on the Last Page:
www.wellvisitplanner.org/Providers/GettingStarted.aspx

Site Specific Options: Key Features

- Site specific URL, logo, some tailored content
- Integration of parent responses into child's electronic health record (EHR)
- Use reports or datasets containing parent responses

Yes

The costs for the site-specific WVP vary & are minimal as possible! Check it out!

If the **Site-Specific WVP** is the right version for you and your practice, continue reading to learn more about the WVP and complete the User Sign Up form to begin working with the CAHMI to define and develop your site specific WVP.

User Sign-Up Form is Here and on the Last Page:
www.wellvisitplanner.org/Providers/GettingStarted.aspx

What are the different options available in the Site-Specific WVP?

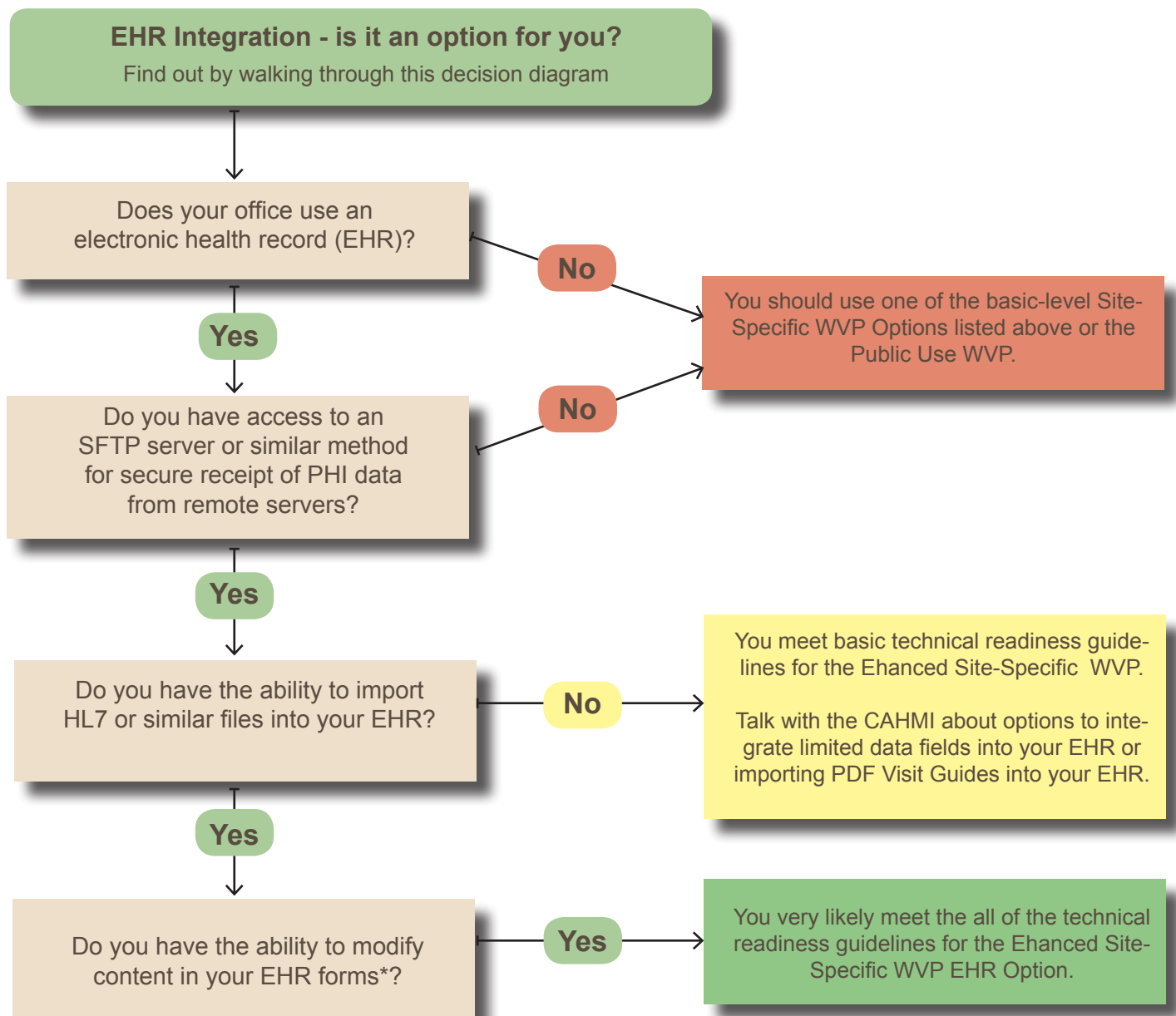
As briefly noted before, the following options are available to further tailor the WVP to your site.

Basic Site-Specific Options

- Site specific URL (e.g. MyClinic.WellVisitPlanner.org)
- Site logo and contact information on website
- Summary reports or full datasets containing WVP responses from your patient population
- Some tailored content where allowable; including links to external developmental screening tools

Enhanced Site-Specific Option

- Receive parent responses and visits guides automatically via secure email (as PDFs)
- Integrate parent responses directly into electronic record fields



Complete the WVP User Sign-Up Form to begin working with the CAHMI to define and develop your site specific WVP



User Sign-Up Form

Fill it out online: www.wellvisitplanner.org/Providers/GettingStarted.aspx

Return to get your implementation toolkit and other information you need to get started! Return to: cahmi@ohsu.edu or 503-494-2475

Select the WVP Options You are Interested In Learning

Before completing this form, please be sure you are read the short "Getting Started" toolkit for the Well-Visit Planner™ Suite of Tools, available at <https://www.wellvisitplanner.org/Providers/GettingStarted.aspx>.

1. Please let us know which of the Well-Visit Planner (WVP) option(s) are of interest to your practice(s). Your responses will help us build a partnership. There are several levels of options, with varying complexity and cost. Though, as a non-profit we seek to keep all costs to a minimum. Please check all the options that apply.

Public Use Website (free) as seen on www.wellvisitplanner.org

- Select this option to receive the Public Use Implementation Toolkit and start using the WVP today
- Supplement the Public Use WVP with the abbreviated paper-pencil version, Shared Encounter Forms (provides a good back up option for parents that forget to complete the WVP online)
- Spanish language version of the Public Use WVP (currently under development, projected completion summer 2013)

Basic Site-Specific Options

- Unique URL (e.g. www.MyClinic.wellvisitplanner.org)
- Branding (e.g. your clinic's logo/contact information)
- Summary reports or full datasets on your patient population
- Add links to external developmental screening tools (for which you have license)
- Tailoring some of the questions asked in the tool (allowable customizations are limited)

Enhanced Site-Specific Options (involves close partnership with the CAHMI due to PHI handling and advanced technical development)

- Receive parent Visit Guides and responses in PDF format via secure email (vs. parent delivery only)
- Integrate parent response directly into fields in your electronic health record (EHR)

Other Supplementary Options

- Measure and improve quality by pairing the WVP with the Promoting Healthy Development Survey (PHDS), an online parent-completed tool that yields automated quality reports with 8 nationally endorsed quality indicators from aggregated parent responses
- Use the WVP to help meet Meaningful Use requirements (still under development, but let us know your interest)
- Use the WVP for Maintenance of Certification (still under development, but let us know your interest)

Tell Us More About You and Your Practice or Site

Date: _____ Your Name and E-Mail: _____

Site/Clinic/Organization Name and Website: _____

Mailing Address (street, city, state & zip): _____

Please Estimate the...

of clinics: _____ # of providers: _____ # of visits/month for children under 4: _____

Please Describe your site (e.g. type of clinic) _____

Telephone Number: _____ FAX Number: _____

How did you hear about the WVP?: E-mail Announcement Social Media Colleague Conference Other

What are your top goals for using the WVP? _____

What are your top questions, concerns or needs? _____